



## District Profile

Based on Unified District Information System for Education (UDISE), 2016-17

District : Maharashtra

### 1 – Demographic (Source : Census of India,2011)

	Male	Female	Person	Sex Ratio	Child Sex Ratio (0-6 years)
Population	58,361,397	54,011,575	112,372,972		
Literacy rate	89.8	75.5	82.9	925	883

### 2- Number of Schools by Management and Category (Class 1 to 12)

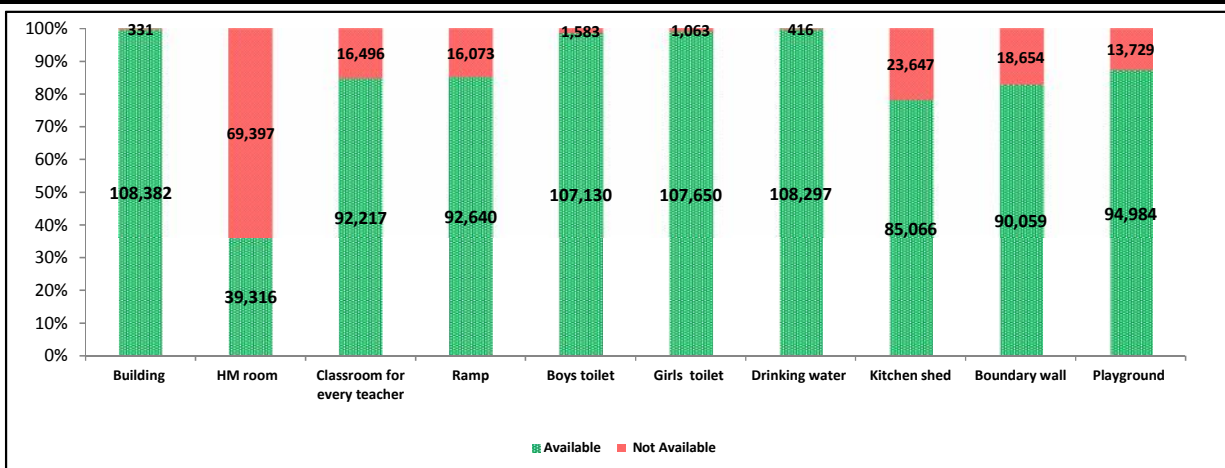
Indicator (Number of schools )	Govt. and Local bodies	Pvt. Aided	Pvt. Unaided	Un-recognised	Total
Primary (1-4/5)	44,516	3,162	5,229	308	53,215
Primary with Upper Primary (1-7/8)	20,851	4,070	4,558	166	29,645
Pri,Upper,Secondary with Hsecondary (1 to 12)	339	4,067	825	3	5,234
Only Upper Primary (5/6 to 7/8)	8	2	101	5	116
Upper,Secondary with Hsecondary (5/6 to 12)	63	993	353	0	1,409
Primary,Upperprimary with Secondary(1 to 10)	841	5,918	2,358	26	9,143
Upperprimary with Secondary(5/6 to 10)	328	3,430	2,422	29	6,209
Secondary Only (8/9 to 10)	176	317	775	28	1,296
Secondary with HSecondary(8/9 to 12)	3	100	90	0	193
Higher Secondary with college attached (11 to 12)	29	713	1,508	3	2,253
<b>Total</b>	<b>67,154</b>	<b>22,772</b>	<b>18,219</b>	<b>568</b>	<b>108,713</b>
Having Primary level classes	66,547	17,217	12,970	503	97,237
Having Upper Primary level classes	22,430	18,480	10,617	229	51,756
Having Secondary level classes	1,750	14,825	6,823	86	23,484
Having HigherSecondary level classes	434	5,873	2,776	6	9,089
Ratio of Primary to Upper Primary schools	State average				1.9
	District				1.8

### 3 - Number of Mediumwise Schools by Management .(Class 1 to 12)

Indicator (Number of Mediumwise schools )	Govt. and Local bodies	Pvt. Aided	Pvt. Unaided	Un-recognised	Total
Marathi	62,990	19,634	5,452	100	88,176
English	321	537	11,546	428	12,832
Hindi	643	702	362	27	1,734
Urdu	2,682	1,639	821	13	5,155
Bangali	53	3	0	0	56
Gujrati	107	152	19	0	278
Kannada	258	73	13	0	344
Sindhi	5	20	2	0	27
Tamil	36	4	1	0	41
Telgu	59	8	3	0	70
Sanskrit	0	0	0	0	0

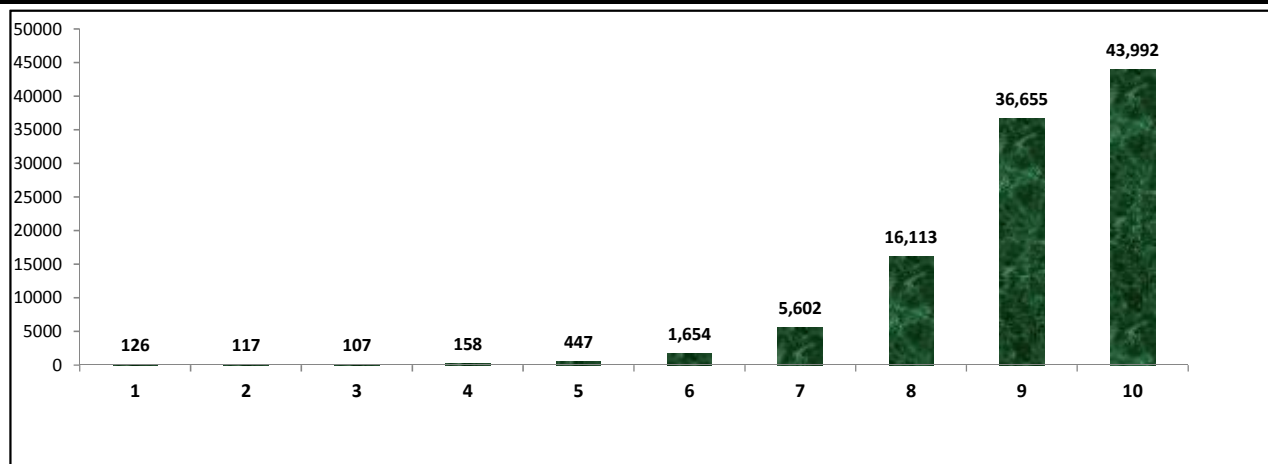
## 4 – Infrastructure at Elementry Level

**Status of Infrastructure Facilities in Schools (Numbers, All schools)**



Indicator : Schools with infrastructure facilities available (Sch.All)		Govt. and Local bodies	Pvt. Aided	Pvt. Unaided	Un-recognised	Total
<b>Total Schools</b>		<b>67154</b>	<b>22772</b>	<b>18219</b>	<b>568</b>	<b>108713</b>
1. Building	Number	66,825	22,771	18,218	568	108,382
	%	99.51	100.00	99.99	100.00	99.70
2. Office-cum-store-cum-HM room	Number	0	21,775	17,079	462	39,316
	%	0.00	95.62	93.74	81.34	36.16
3. One classroom for every teacher	Number	57,316	19,873	14,610	418	92,217
	%	85.35	87.27	80.19	73.59	84.83
4. Ramp	Number	63,107	17,507	11,716	310	92,640
	%	93.97	76.88	64.31	54.58	85.22
5. Separate toilet for boys	Number	65,713	22,703	18,150	564	107,130
	%	97.85	99.70	99.62	99.30	98.54
6. Separate toilet for girls	Number	66,199	22,732	18,153	566	107,650
	%	98.58	99.82	99.64	99.65	99.02
7. Drinking water facility	Number	66,807	22,760	18,162	568	108,297
	%	99.48	99.95	99.69	100.00	99.62
8. Kitchen shed (Gov & Aided Schools)	Number	64,191	20,875	NA	NA	85,066
	%	95.59	91.67	NA	NA	94.60
9. Boundary wall	Number	52,008	20,867	16,726	458	90,059
	%	77.45	91.63	91.81	80.63	82.84
10. Playground	Number	55,617	21,971	16,924	472	94,984
	%	82.82	96.48	92.89	83.10	87.37
<b>Indicators</b>		<b>Govt. and Local bodies</b>	<b>Pvt. Aided</b>	<b>Pvt. Unaided</b>	<b>Un-recognised</b>	<b>Total</b>
Number of classrooms(1 to 8)		272,004	157,848	125,139	3,371	558,362
Number of classrooms(9 to 10)		5,705	57,113	19,818	185	82,821
Number of classrooms(11 to 12)		1,574	32,513	11,884	18	45,989
<b>Student Classroom Ratio (SCR) Primary</b>		<b>32</b>	<b>UpperPri.</b>	<b>32</b>	<b>Elementry</b>	<b>32</b>
Primary schools having SCR more than 30	Number	3,263	1,556	1,446	72	6,337
	%	7.33	49.21	27.65	23.38	11.91
Upper Primary. schools having SCR more than 35	Number	4,759	13,690	5,562	63	24,074
	%	21.22	74.08	52.39	27.51	46.51
Schools fulfilling "10" infrastructure norms for building under RTE (Ele.Sch.)	Number	24,838	12,197	6,806	151	43,992
	%	37.00	55.29	40.73	26.73	41.32

**Number of schools by number of infrastructure elements compliance**



**5- Enrolment (Class 1 to 12)**

Number of students enrolled in		Govt. and Local bodies	Pvt. Aided	Pvt. Unaided	Un-recognised	Total
Primary Classes (1-5)	Boys	2,215,590	1,369,709	1,692,641	36,884	5,314,824
	Girls	2,191,871	1,228,967	1,236,836	29,611	4,687,285
	Total	4,407,461	2,598,676	2,929,477	66,495	10,002,109
Upper Primary Classes (6-8)	Boys	636,270	1,822,034	716,743	5,874	3,180,921
	Girls	674,867	1,618,363	504,685	4,767	2,802,682
	Total	1,311,137	3,440,397	1,221,428	10,641	5,983,603
Secondary Classes (9-10)	Boys	123,906	1,494,917	432,048	2,429	2,053,300
	Girls	114,745	1,281,006	303,139	1,959	1,700,849
	Total	238,651	2,775,923	735,187	4,388	3,754,149
Higher Secondary Classes (11-12)	Boys	41,242	1,192,386	314,239	470	1,548,337
	Girls	37,751	1,056,918	217,101	398	1,312,168
	Total	78,993	2,249,304	531,340	868	2,860,505
Elementary Classes (1-8)	Boys	2,851,860	3,191,743	2,409,384	42,758	8,495,745
	Girls	2,866,738	2,847,330	1,741,521	34,378	7,489,967
	Total	5,718,598	6,039,073	4,150,905	77,136	15,985,712
All Classes (1-12)	Boys	3,017,008	5,879,046	3,155,671	45,657	12,097,382
	Girls	3,019,234	5,185,254	2,261,761	36,735	10,502,984
	Total	6,036,242	11,064,300	5,417,432	82,392	22,600,366

**5.1- Castewise Enrolment (Class 1 to 12)**

Indicator	Primary	Upper Primary	Secondary	Higher Sec.	Elementry	All
<b>All Social Groups</b>	<b>10,002,109</b>	<b>5,983,603</b>	<b>3,754,149</b>	<b>2,860,505</b>	<b>15,985,712</b>	<b>22,600,366</b>
General	4,168,508	2,448,165	1,527,197	1,222,186	6,616,673	9,366,056
Schedule Castes (SC)	1,284,721	804,692	534,499	386,690	2,089,413	3,010,602
Schedule Tribes (ST)	1,221,984	699,442	363,249	208,736	1,921,426	2,493,411
Other Backward Classes (OBC)	3,326,896	2,031,304	1,329,204	1,042,893	5,358,200	7,730,297
Muslim	1,350,330	765,735	1,350,330	224,378	2,116,065	3,690,773
Nomadic Tribes (NT)	686,165	417,775	261,908	180,728	1,103,940	1,546,576
Vimukat Jatis (VJ)	381,420	228,895	127,248	610,315	610,315	1,347,878
Special Backward Classes (SBC)	120,752	84,710	60,455	48,225	205,462	314,142
Bouddhist Minority	307,507	184,571	115,268	75,022	492,078	682,368
Parshi Minority	4,653	3,381	2,257	1,725	8,034	12,016
Christan Minority	50,049	31,223	20,845	17,954	81,272	120,071
Sikh Minority	12,993	8,150	5,538	5,174	21,143	31,855
Jain Minority	57,294	42,410	27,842	19,106	99,704	146,652
B. P. L.	655,892	316,256	158,749	80,002	972,148	1,210,899
Children with Special Needs (C.W.S.N.)	177,166	105,519	46,464	10,998	282,685	340,147

## 5.2- Mediumwise Enrolment (Class 1 to 12)

Indicator (Number of Mediumwise schools )	Govt. and Local bodies	Pvt. Aided	Pvt. Unaided	Un-recognised	Total
Marathi	884,763	9,178,425	884,763	11,459	10,959,410
English	4,329,183	647,131	4,329,183	65,088	9,370,585
Hindi	153,470	352,481	71,926	3,245	581,122
Urdu	420,404	793,109	128,251	2,600	1,344,364
Bangali	4,993	386	0	0	5,379
Gujrati	7,542	66,219	1,546	0	75,307
Kannada	19,201	20,802	1,144	0	41,147
Sindhi	33	4,486	279	0	4,798
Tamil	5,414	532	117	0	6,063
Telgu	3,320	729	223	0	4,272
Sanskrit	0	0	0	0	0
School size (Distribution of schools by Enrolment)	Govt. and Local bodies	Pvt. Aided	Pvt. Unaided	Un-recognised	Total
Less than 10	3,930	585	467	21	5,003
11-20	6,823	1,164	828	21	8,836
21-30	9,774	1,913	1,296	43	13,026
31-60	11,759	2,766	2,556	76	17,157
61-150	15,616	4,974	4,589	156	25,335
More than 150	19,252	11,370	8,483	251	39,356

## 6- Gender Gap in Enrolment (in %)

Indicator	Primary	Upper Primary	Secondary	Higher Secondary	Elementry	All
All Social Groups	6.27	6.32	9.39	8.26	6.29	7.05
General	7.51	7.35	9.28	8.25	7.45	7.85
Schedule Castes (SC)	4.19	4.17	8.39	7.44	4.18	5.35
Schedule Tribes (ST)	3.19	5.30	10.23	10.93	3.96	5.45
Other Backward Classes (OBC)	6.66	6.29	9.68	2.74	4.81	4.71
Muslim	2.93	2.78	4.37	1.13	2.87	2.96
Nomadic Tribes (NT)	6.26	6.09	10.37	11.62	6.19	7.53
Vimukat Jatis (VJ)	6.12	6.83	14.42	19.48	6.39	8.81
Special Backward Classes (SBC)	5.51	3.80	5.95	5.95	4.81	4.71
Bouddhist Minority	4.43	4.30	8.78	5.03	4.38	5.20
Parshi Minority	5.14	9.67	5.98	11.07	7.05	7.42
Christan Minority	1.32	0.36	1.83	-0.84	0.95	0.84
Sikh Minority	7.89	5.18	6.43	-4.64	6.84	4.91
Jain Minority	5.35	4.56	6.56	3.92	5.01	5.16
B. P. L.	11.70	6.78	4.29	0.49	10.10	8.70
Children with Special Needs (C.W.S.N.)	20.74	14.43	9.36	3.99	0.95	16.67
No. of clusters having gender gap > 10 %	901	1,161	2,338	1,688	811	1,106
No. of Block having gender gap > 10 %	35	38	145	158	33	65

## 7- Teacher (Class 1 to 12)

Indicators	Govt. and Local bodies	Pvt. Aided	Pvt. Unaided	Un-recognised	Total
Number of Teachers	Male	166,271	207,019	59,078	433,111
	Female	99,092	95,036	113,504	310,356
	<b>Total</b>	<b>265,363</b>	<b>302,055</b>	<b>172,582</b>	<b>743,467</b>
Percentage of female teachers to total teachers	37.34	31.46	65.77	78.57	41.74
Schools without a female teacher	<b>Number</b>	<b>26,249</b>	<b>4,643</b>	<b>2,488</b>	<b>35</b>
	%	39.09	20.39	13.66	6.16

### 7.1- Mediumwise Teacher (Class 1 to 12)

Medium	Govt. and Local bodies	Pvt. Aided	Pvt. Unaided	Un-recognised	Total
Marathi	238,217	255,961	32,389	0	526,567
English	4,702	12,915	133,515	0	151,132
Hindi	5,667	9,739	2,299	0	17,705
Urdu	14,602	20,168	4,200	0	38,970
Bangali	243	21	0	0	264
Gujrati	482	2,342	92	0	2,916
Kannada	974	707	61	0	1,742
Sindhi	6	152	10	0	168
Tamil	254	13	5	0	272
Telgu	215	37	11	0	263
Sanskrit	0	0	0	0	0

### 7.2- Castewise Teacher (Class 1 to 12)

Caste	Govt. and Local bodies	Pvt. Aided	Pvt. Unaided	Un-recognised	Total
All	262,180	297,567	171,641	3,453	734,841
Genral	102,992	157,098	118,651	2,173	380,914
SC	32,638	31,370	12,618	320	76,946
ST	25,019	16,043	4,440	138	45,640
OBC	65,107	65,213	27,143	650	158,113
VJ	7,376	7,874	2,233	26	17,509
OTHER	896	929	1,075	56	2,956
SBC	6,999	4,239	1,494	38	12,770
NT-B	6,996	5,127	1,506	21	13,650
NT-C	7,946	6,116	1,570	21	15,653
NT-D	6,211	3,558	911	10	10,690

Indicators		Govt. and Local bodies	Pvt. Aided	Pvt. Unaided	Un-recognised	Total
Schools with single teacher	Number	2,784	69	450	12	3,315
	%	4.15	0.30	2.47	2.11	3.05
PTR	Local Body-Only	Primary Section	Upper Primary Section	Secondary Section	Elementry Section	All (Class 1-12)
Pupil Teacher Ratio	22	30	31	25	30	30

Indicators		Govt. and Local bodies	Pvt. Aided	Pvt. Unaided	Un-recognised	Total
Primary schools having PTR more than 30	Number	3,359	1,835	1,675	87	6,956
	%	7.55	58.03	32.03	28.25	13.07
Upper Primary having PTR more than 35	Number	4,464	10,106	4,419	54	19,043
	%	19.90	54.69	41.62	23.58	36.79
Trained /Untrained Teacher	Primary Section	Upper Primary Section	Secondary Section	Higher Secondary Section	Elementry Section	All
Teacher All	338,890	191,595	149,198	63,784	530,485	743,467
Trained Teacher Number	334,761	190,120	148,489	62,815	524,881	736,185
%	98.78	99.23	99.52	98.48	98.94	99.02
Untrained Teacher All Number	4,129	1,475	709	969	5,604	7,282
%	1.22	0.77	0.48	1.52	1.06	0.98

**8-Efficiency indicators**  
**8.1 Annual Average Drop-out Rate**

Social Groups	Primary			UpperPrimary		
	Boys	Girls	Total	Boys	Girls	Total
All Social Groups	0.65	0.74	0.70	0.46	1.74	1.06
General	0.39	0.68	0.52	0.42	1.35	0.85
Schedule Castes (SC)	0.61	0.68	0.70	-0.51	1.64	0.52
Schedule Tribes (ST)	1.90	0.79	1.81	2.95	4.81	3.83
Other Backward Classes (OBC)	0.57	0.43	0.50	0.06	1.19	0.59
Vimukat Jatis (VJ)	-2.36	-2.15	-2.26	-6.37	-3.72	-5.15
Nomadic Tribes (NT)	-8.77	-7.94	-8.38	-6.37	-7.98	-9.64
Special Backward Classes (SBC)	1.49	-0.42	0.59	-5.10	-3.96	-4.55
Muslim	2.63	3.11	2.87	4.38	5.64	4.99

**8.2 Transition Rate**

Social Groups	Primary			UpperPrimary		
	Boys	Girls	Total	Boys	Girls	Total
All Social Groups	99.35	99.11	99.24	100.44	97.59	99.12
General	99.35	98.95	99.14	100.22	98.10	99.25
Schedule Castes (SC)	99.69	99.26	99.48	102.91	98.36	100.76
Schedule Tribes (ST)	98.65	98.25	98.46	95.93	91.86	94.04
Other Backward Classes (OBC)	99.53	99.57	99.55	101.13	101.13	99.89
VJ / NT	103.40	103.29	103.35	104.51	100.29	102.57
Special Backward Classes (SBC)	100.89	105.92	103.24	108.47	103.90	106.28
Muslim	95.77	95.92	99.14	96.53	92.98	94.81

**8.3 Gender Parity Index (GPI)**

Social Groups	Primary Section	Upper Primary Section	Secondary Section	Higher Secondary Section	Elementary Section	All (Class 1-12)
All Social Groups	0.88	0.88	0.83	0.85	0.88	0.87
General	0.86	0.86	0.83	0.85	0.86	0.85
Schedule Castes (SC)	0.92	0.92	0.85	0.85	0.92	0.90
Schedule Tribes (ST)	0.94	0.90	0.81	0.80	0.92	0.90
Other Backward Classes (OBC)	0.88	0.88	0.82	0.85	0.88	0.86
Vimukat Jatis (VJ)	0.88	0.87	0.75	0.67	0.88	0.84
Nomadic Tribes (NT)	0.88	0.89	0.81	0.79	0.88	0.86
Special Backward Classes (SBC)	0.90	0.93	0.89	0.95	0.91	0.91
Muslim	0.94	0.95	0.92	0.98	0.94	0.94

**8.4 Retention Rate**

Social Groups	Primary			UpperPrimary		
	Boys	Girls	Total	Boys	Girls	Total
All Social Groups	96.85	96.80	96.83	97.77	97.77	97.27
General	98.94	98.43	98.70	98.85	98.85	97.91
Schedule Castes (SC)	94.66	95.06	94.85	97.58	96.01	96.83
Schedule Tribes (ST)	90.51	91.46	90.97	94.05	92.32	93.23
Other Backward Classes (OBC)	97.54	97.67	97.60	97.86	97.08	97.49
Muslim	93.16	92.43	96.83	92.65	91.03	97.27

## 9. Right To Education (RTE) Information

Subject		Govt. & Local Bodies	Private Aided	Private Un-Aided	Unrecognised	Total
<b>Elementry Schools All(Classess Having 1 to 8)</b>		<b>66,946</b>	<b>21,642</b>	<b>15,846</b>	<b>537</b>	<b>104,971</b>
No of Schools CCE being implemented in school	No of Schools	66,833	21,122	14,415	453	<b>102,823</b>
	%	<b>99.83</b>	<b>97.60</b>	<b>90.97</b>	<b>84.36</b>	<b>97.95</b>
No of Schools having maintained pupil comulative records	No of Schools	66,804	21,001	13,961	436	<b>102,202</b>
	%	<b>99.79</b>	<b>97.04</b>	<b>88.10</b>	<b>81.19</b>	<b>97.36</b>
No. of Schools having shared pupil comulative records with parents	No of Schools	66,810	21,015	13,946	431	<b>102,202</b>
	%	<b>99.80</b>	<b>97.10</b>	<b>88.01</b>	<b>80.26</b>	<b>97.36</b>
No. of Schools having Constituted SMC	No of Schools	66,775	18,843	NA	NA	<b>85,618</b>
	%	<b>99.74</b>	<b>87.07</b>	NA	NA	<b>96.65</b>
No. of Schools having Constituted SMDC	No of Schools	66,434	15,618	NA	NA	<b>82,052</b>
	%	<b>99.24</b>	<b>72.17</b>	NA	NA	<b>92.62</b>
No. of Schools having Constituted SMC & SMDC are same	No of Schools	8	4	NA	NA	<b>13</b>
	%	<b>0.01</b>	<b>0.02</b>	NA	NA	<b>0.01</b>
Avg. total no. of SMC Members in schools	Male	66434	15618	NA	NA	<b>84177</b>
	Female	225	206	NA	NA	<b>216</b>
Avg. no. of representative of parents / Guardians / PTA in SMC	Male	8	4	NA	NA	<b>5</b>
	Female	65872	15836	NA	NA	<b>85650</b>
Avg. no. of representative of local authorities / local government /urban	Male	66434	15618	NA	NA	<b>84177</b>
	Female	225	206	NA	NA	<b>216</b>
Avg. no. of SMC meetings held in previous year		8	4	NA	NA	<b>5</b>
No.. of Schools having prepared SDP		65,872	15,836	NA	NA	<b>85,650</b>
No. of Schools having maintained separate SMC bank accounts		66,434	15,618	NA	NA	<b>84,177</b>
Avg. no. of instructional days of school in previous year	Primary	225	206	220	213	<b>216</b>
	Upper Primary	227	221	216	209	<b>218</b>
	Secondary	0	0	0	0	<b>0</b>
	Higher Secondary	0	0	0	0	<b>0</b>
Avg. of staying childrens hours in schools per day	Primary	5.6	5.0	5.4	5.5	<b>5.4</b>
	Upper Primary	5.6	5.4	5.3	5.3	<b>5.4</b>
	Secondary	0.0	0.0	0.0	0.0	<b>0.0</b>
	Higher Secondary	0.0	0.0	0.0	0.0	<b>0.0</b>
Avg. of teachers working hours in school per day	Primary	6.4	5.8	6.2	6.4	<b>6.2</b>
	Upper Primary	6.3	4.3	4.6	5.4	<b>5.1</b>
	Secondary	0.0	0.0	0.0	0.0	<b>0.0</b>
	Higher Secondary	0.0	0.0	0.0	0.0	<b>0.0</b>
No of Schools having complete set of free text book received	Primary	0	0	0	0	<b>0</b>
	Upper Primary	0	0	0	0	<b>0</b>
No of Schools having TLE available for each grade	Primary	0	0	0	0	<b>0</b>
	Upper Primary	0	0	0	0	<b>0</b>
No of Schools having playing material, games and sports equipment available for each grade\	Primary	0	0	0	0	<b>0</b>
	Upper Primary	0	0	0	0	<b>0</b>
No. of Schools having any children enrolled in school special training	Schools	0	0	0	0	<b>0</b>
No of Children Enrolled for Special Training in Previous Year	Boys	0	0	0	0	<b>0</b>
	Girls	0	0	0	0	<b>0</b>
No of Children Provided for Special Training in Previous Year	Boys	0	0	0	0	<b>0</b>
	Girls	0	0	0	0	<b>0</b>

### 9. Right To Education (RTE) Information

Subject		Govt. & Local Bodies	Private Aided	Private Un-Aided	Unrecognised	Total
<b>Elementry Schools All(Classses Having 1 to 8)</b>		<b>66,946</b>	<b>21,642</b>	<b>15,846</b>	<b>537</b>	<b>104,971</b>
No of Children Enrolled for Special Training in Current Year	Boys	17,016	7,691	6,741	351	31,799
	Girls	11,289	5,751	4,950	446	22,436
No of Children Provided for Special Training in Current Year	Boys	14,417	5,761	4,381	602	25,161
	Girls	9,549	2,294	1,781	250	13,874
No. of Childrens completed special training during previous year	School Teachers	2,601	822	257	0	3,680
	Specially engaged	3,175	3,175	208	208	6,766
	Both	0	0	0	0	0
	NGO	16	9	1	0	26
	Other	61,230	21,068	21,068	17,713	121,079
Special training is conducted in	None	13	10	2	0	25
	School premises	2,601	822	257	3	3,683
	Other than School premises	3,175	812	208	6	4,201
	Both	119	51	38	0	208
Type of Training	Residential	3,992	1,219	373	6	5,590
	Non Residential	1,323	339	373	2	2,037
	Both	124	56	44	1	225

### 10. CWSN with Special Needs (Current Year)

Type of Facility	Elementary			Secondary / Hsecondary		
	Boys	Girls	Total	Boys	Girls	Total
Visual Impairment (Blindness)-TB	4,234	3,529	7,763	1,167	831	1,998
Visual Impairment (Low vision) -LV	34,047	31,920	65,967	10,302	13,412	23,714
Hearing impairment-HI	17,884	12,964	30,848	3,596	2,519	6,115
Speech impairment-SI	18,148	9,012	27,160	2,040	1,014	3,054
Loco Motor Impairment-OH	22,265	13,462	35,727	6,102	3,936	10,038
Mental Retardation-MR	35,851	21,648	57,499	3,105	1,883	4,988
Learning disability-LD	23,072	15,907	38,979	3,776	2,161	5,937
Cerebral Palsy-CP	2,270	1,400	3,670	291	158	449
Autism-ASD	1,672	892	2,564	137	63	200
Multiple disability-MD	7,774	4,734	12,508	625	344	969
<b>Total</b>	<b>167,217</b>	<b>115,468</b>	<b>282,685</b>	<b>31,141</b>	<b>26,321</b>	<b>57,462</b>
<b>Grand Total (Class 1 to 12)</b>	<b>198,358</b>	<b>141,789</b>	<b>340,147</b>			

### 11. Facilities provided to CWSN (Previous Year)

Type of Facility	Elementary			Secondary / Hsecondary		
	Boys	Girls	Total	Boys	Girls	Total
Brail Books	1,244	586	1,830	86	49	135
Brail Kit	467	340	807	30	18	48
Low vision Kit	549	556	1,105	199	219	418
Hearing aid	1,958	1,389	3,347	276	146	422
Braces	59	45	104	6	7	13
Crutches	154	95	249	33	12	45
Wheel Chair	1,598	805	2,403	90	58	148
Tri-Cycle	317	317	634	58	58	116
Caliper	317	171	488	58	31	89
<b>Total</b>	<b>6,663</b>	<b>4,304</b>	<b>10,967</b>	<b>836</b>	<b>598</b>	<b>1,434</b>
<b>Grand Total (Class 1 to 12)</b>	<b>7,499</b>	<b>4,902</b>	<b>12,401</b>			



## Educational Development Index

Management	All
Indicator / District	
<b>Access</b>	
01. Density of Schools per 10 Sq.Km. All	3.16
02. Availability of schools per 1000 child population census	9.72
03. Ratio of primary to Upper Primary Schools/Sections	1.88
<b>Infrastructure</b>	
04. % of Schools with SCR>30	11.91
05. % of Schools with SCR>35	46.51
06. Percentage of Schools with 1:1 Classroom Teacher Ratio	84.83
07. % of Schools with Water facility	99.62
08. % of Schools with Boys Toilet	98.54
09. % of Schools with Girls Toilets	99.02
10. % of Schools with Ramp	85.22
11. % of Schools with Kitchen Shead ( Gov & Aided)	95.19
<b>Teacher</b>	
12. % of schools with female teachers ( in schools with 2 and more teachers)	30.74
13. % of Schools with PTR>30	13.07
14. % of Schools with PTR>35	36.79
15. % of Single Teacher Schools	3.05
16. % without Professional Qualification	0.98
<b>OutComes</b>	
17. Average number of instructional days -Primary	216.18
18. Average number of instructional days -Upper Primary	218.30
19. Average working hours for teachers-Primary	6.17
20. Average working hours for teachers-Upper Primary	5.14
21. % of change in enrollment in Gov schools over the previous year	0.00
22. Gross Enrollment Ratio	98.76
23. Retention Rate	91.30
24. Participation of SC children ((% of SC Population (2001 census)- % of SC Enrollment)	13.32
25. Participation of ST children ((% of ST Population (2001 census)- % of ST Enrollment)	11.03
26. Participation of Muslim children ((% of Muslim Population (2001 census)-% of Muslim Enrollment)	12.23
27. Ratio of Girls Enrollment to Boys Enrollment	1.80
28. DROPOUT RATE	0.70
29. Transition Rate for primary to upper primary	99.24

## Schools ,Enrollment & Teachers (Class 1 to 12 )

Management	Schools	Enrollments	Teachers	Classrooms	PTR	SCR
Department of Education	50	12799	371	345	34.5	37.1
Zilla Parishad	61987	4771076	223377	240419	21.4	19.8
MNC	3018	736560	24622	21692	29.9	34.0
Nagar Palika	1298	207009	7495	8065	27.6	25.7
Local body	1	459	10	13	45.9	35.3
Cantonment Board	38	10492	410	369	25.6	28.4
Tribal/Social Welfare Dept.	0	0	0	0	0.0	0.0
Social Welfare	120	14918	641	649	23.3	23.0
Tribal Welfare	529	188927	5230	5129	36.1	36.8
Central Govt.	72	75476	2415	2088	31.3	36.1
Central School	0	0	0	0	0.0	0.0
Govt Military School	1	658	29	18	22.7	36.6
Navoday Vodyalay	32	14566	655	416	22.2	35.0
Railway School	8	3232	108	80	29.9	40.4
<b>Gov &amp; Local Body</b>	<b>67154</b>	<b>6036172</b>	<b>265363</b>	<b>279283</b>	<b>22.7</b>	<b>21.6</b>
Social Welfare Aided	1493	254202	11313	10705	22.5	23.7
Tribal Welfare Aided	887	249003	7171	6164	34.7	40.4
Pvt. Aided	19479	10266545	275413	222864	37.3	46.1
Partially Aided	884	276085	7402	7257	37.3	38.0
Pvt. Military School	29	18517	756	484	24.5	38.3
<b>Private Aided</b>	<b>22772</b>	<b>11064352</b>	<b>302055</b>	<b>247474</b>	<b>36.6</b>	<b>44.7</b>
Social Welfare Unaided	477	34078	2901	2902	11.7	11.7
Tribal Welfare Unaided	0	0	0	0	0.0	0.0
Unaided	4528	1086422	33148	31087	32.8	34.9
Pvt. Unaided	0	0	0	0	0.0	0.0
Permanent Unaided	8423	3762681	110167	95516	34.2	39.4
Self Finance	4659	526660	25876	26688	20.4	19.7
Vedic/sanskrit/Dharmic School	4	261	22	24	11.9	10.9
Madarsa recognized	65	3528	234	332	15.1	10.6
Madarsa unrecognized	63	3820	234	292	16.3	13.1
Others	0	0	0	0	0.0	0.0
No Response	0	0	0	0	0.0	0.0
<b>Private Unaided</b>	<b>18219</b>	<b>5417450</b>	<b>172582</b>	<b>156841</b>	<b>31.4</b>	<b>34.5</b>
<b>Un-Recognised</b>	<b>568</b>	<b>82392</b>	<b>3467</b>	<b>3574</b>	<b>23.8</b>	<b>23.1</b>
<b>Grand Total</b>	<b>108713</b>	<b>22600366</b>	<b>743467</b>	<b>687172</b>	<b>30.4</b>	<b>32.9</b>